



PNLR Series LED Tunable Flat Panel

- ✓ UL and DLC certified
- ✓ Equipped with Fire Safety Aircraft Cable
- ✓ 1% to 100% Dimming Option
- ✓ Adjustable Color Temperature Setting
- ✓ 50,000 Hour Design Life
- ✓ 5 Year Manufacturers Limited Warranty

Nominal Specifications

LifeLux™ STD Rating

Power
20W-35W (2x2, 1x4), 35W-50W (2x4)

Lumen Output
125 Lm/W

Color Temperature
3000K-5000K (Adjustable)

Design Life
50,000 hrs

Beam Angle
120 Degree

CRI
>80

Power Factor
>0.95

Voltage
AC100-277V

Warranty
5 Year Manufacturers Limited Warranty

Dimensions

PNLR14 - 11.9" x 47.75" x 0.35" - 8.4 lbs.

PNLR22 - 23.75" x 23.75" x 0.35" - 7.3 lbs.

PNLR24 - 23.75" x 47.75" x 0.39" - 13.9 lbs.

Certifications

UL, DLC

ORDERING DATA: Per chart below

Example : USALED-PNLR22-20-Y-01

XXXXXX	XXXXXX	XXXXXX	XXXXXX	XXXXXX	XXXXXX
USALED	Size PNLR14 = 1' x 4' PNLR22 = 2' x 2' PNLR24 = 2' x 4'	Wattage 40 = 40W 40 = 40W 50 = 50W	Dimming Y = Dimmable	LED Combination 01 = Standard Combination	Options Diming = 1% - 100% WS = Wall Switch EM = Emergency Backup

FEATURES

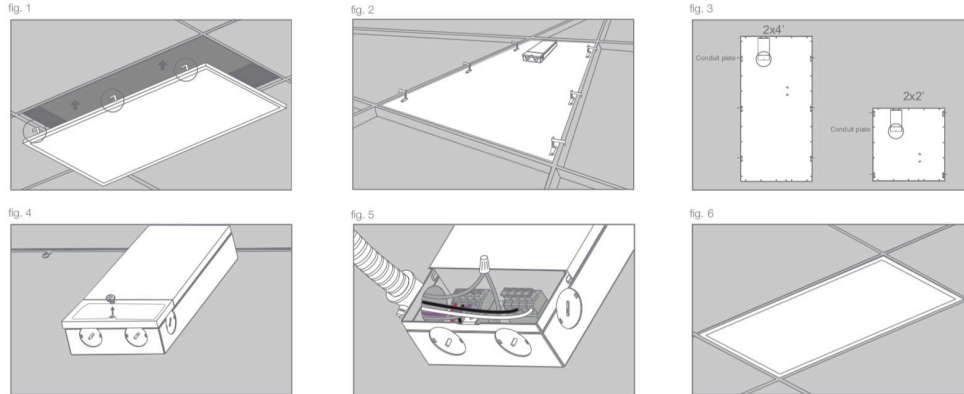
- Preset Color Options at 3000K, 3500K, 4000K, 5000K, Also Tunable between 2700K-6500K
- Despite Preset Options it can be dimmed from 1% to 100%
- Allows up to 99 fixtures to be controlled by one remote or wall switch
- Fire Safety Aircraft Cable

APPLICATIONS

Offices, Retail Stores, Hospitals, Hotels, Restaurants, and other Commercial Buildings

Kit Includes: AAA Battery-Powered Remote or Optional Wall Switch upon order

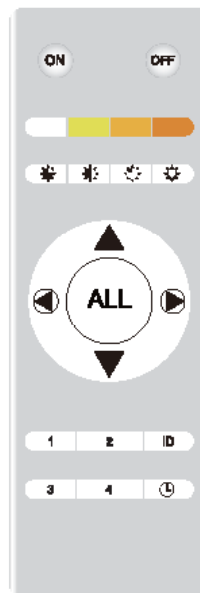




Installation Summary: (Detailed Instructions provided with Product)

1. Turn off Power.
2. Disconnect the existing fixture and remove.
3. Open the driver cover on the backside of the panel with a screwdriver.
4. Connect the wire leads to the driver, securing as necessary.
5. Close and reattach the driver cover.
6. Secure panel into place.
7. Test light to ensure the electrical connection is sound.
8. Test the Remote Control to ensure the light is synchronized.

Model #	Size	Wattage	CCT	Nominal Lumen Output
USALED-PNLR22	2 x 2 ft	20W-35W	3000K-5000K Tuneable	2,500 lm - 4,375 lm
USALED-PNLR14	1 x 4 ft	20W-35W	3000K-5000K Tuneable	2,500 lm - 4,375 lm
USALED-PNLR24	2 x 4 ft	35W-50W	3000K-5000K Tuneable	4,375 lm - 6,250 lm



ON	OFF	ON Turn on	OFF Turn off
Matching code for light			
<p>ID Long pressing the 'ID' button will turn the controller's indicator on. Then turn on the light and release the 'ID' button after the light flashes, matching code complete. Matching code for several lights simultaneously is available.</p>			
<p>Release the code and disconnect light from remote controller Press the button 'ID' + ▼ together, then turn on the light, the light will flash to indicate releasing the code on the light.</p>			
Group selecting button			
<p>Grouping lights (matching code process needs to be completed first). Turn off the lights, continue pressing the group selector button for 3s, then turn on the light, the light will flash to finish grouping.</p>			
Turn-off delay			
<p>Press the (⌚) button, the delay function will begin after the light flashes once. The light will be turned off after 10s. Pressing the 'ON' button will cancel the delay function.</p>			
All Groups are selected			
Color temperature matching/setting			
<p>After selecting the color temperature, press the button "OFF" then turn on the light to save the color temperature.</p>			
5000K	3500K	4000K	3000K
25% brightness	75% brightness	50% brightness	100% brightness
Increase brightness	Decrease color temperature	Decrease brightness	Increase color temperature

- After turned on, the light will automatically detect the D-10v dimmer setting to determine the brightness. It will default to 100% brightness if there is no dimmer input.
- If the dimmer is used, the light brightness will convert to D-10v dimmer's current brightness setting.
- If the remote controller is used, the light brightness will only change from its current brightness.